



red.dwarf

jaga



COLOUR CHART

JAGA COLOUR CHART

Grilles:

only available in glossy (code 2..) or special colours 006, 005, 026 or 028.



133 (Sof touch, traffic white RAL 9016) is the only standard color for enclosures. All other colors are available as an option.

Jaga colours are available in 3 alternative finishes:

CODE 1.. → SOFT TOUCH: fine structured, satin look

CODE 2.. → GLOSSY: smooth glossy finish

CODE 3.. → SATIN: smooth satin look

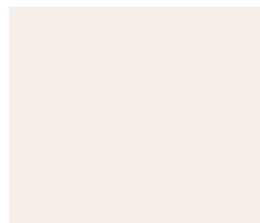
COLOUR CODE . 33

|Complete code with 1, 2, 3

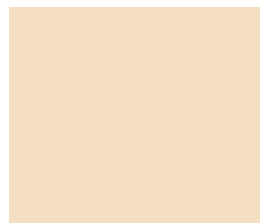
.33 Traffic white RAL 9016



.01 White RAL 9010



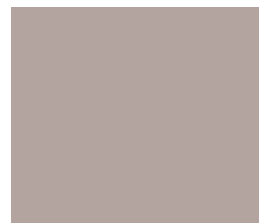
.05 Pergamon



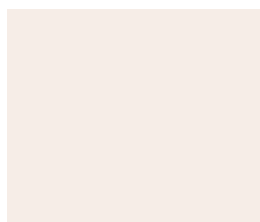
.23 Natural



.12 Bahama



.34 Warm brown RAL 070 60 10



.02 Off-white RAL 9001



.35 Traffic yellow RAL 1023



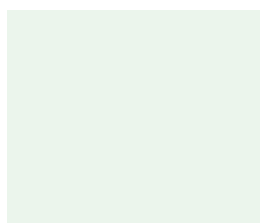
.36 Orange



.11 Flaming Red RAL 3000



.26 Ruby red RAL 3003



.20 Aegean



.37 Yellow green RAL 110 80 60



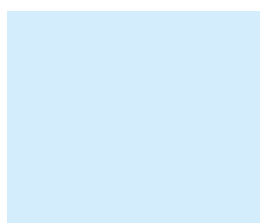
.38 Green



.21 Calypso



.13 English green RAL 6009



.39 Azure



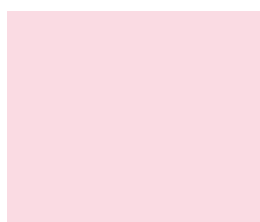
.40 Ocean blue RAL 230 70 30



.08 Sapphire blue RAL 5003



.41 Night blue RAL 5011



.42 Pink



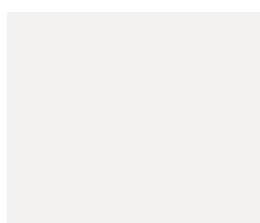
.43 Magenta RAL 010 50 50



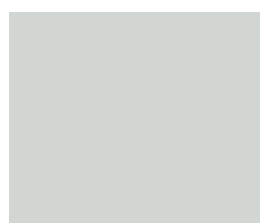
.19 Violet RAL 4008



.44 Purple



.28 Classic white



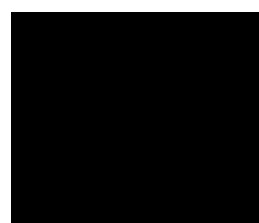
.03 Light grey RAL 7035



.09 Dark grey RAL 7011



.31 Anthracite grey RAL 7016



.04 Black RAL 9005

SPECIAL COLOURS

SMOOTH METALLICS



006 Aluminium RAL 9006



049 Anodic grey



005 Gunmetal grey



007 Anthracite



051 Yellow gold



050 Old gold

FINE TEXTURE METALLIC



035 Silver grey



036 Warm grey



045 Concrete grey



001 Sandblast grey



018 Pearl black



037 Cream



039 Grey brown



038 Cappuccino

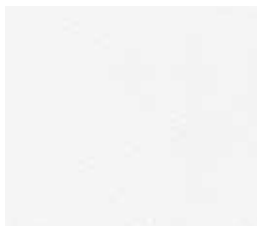


042 Chocolate



017 Pearl brown

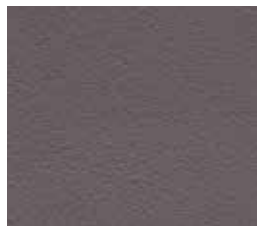
FINE TEXTURE



053 Pure white



026 Platinum grey



028 Granite grey



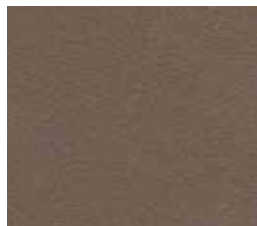
046 Graphite black



040 Copper



041 Cinnamon



043 Khaki



044 Navy blue

This colour chart is only indicative. It's impossible to obtain a 100% exact colour reproduction in printing. A colour chart can be obtained on request.